



Opioid Settlement Planning & Fatal Overdoses: Looking Forward

Victoria Reichard, LCSW, Behavioral Health Manager

Tiffany Iheanacho, Justice Services Director

Board of Commissioners Briefing

May 16, 2023

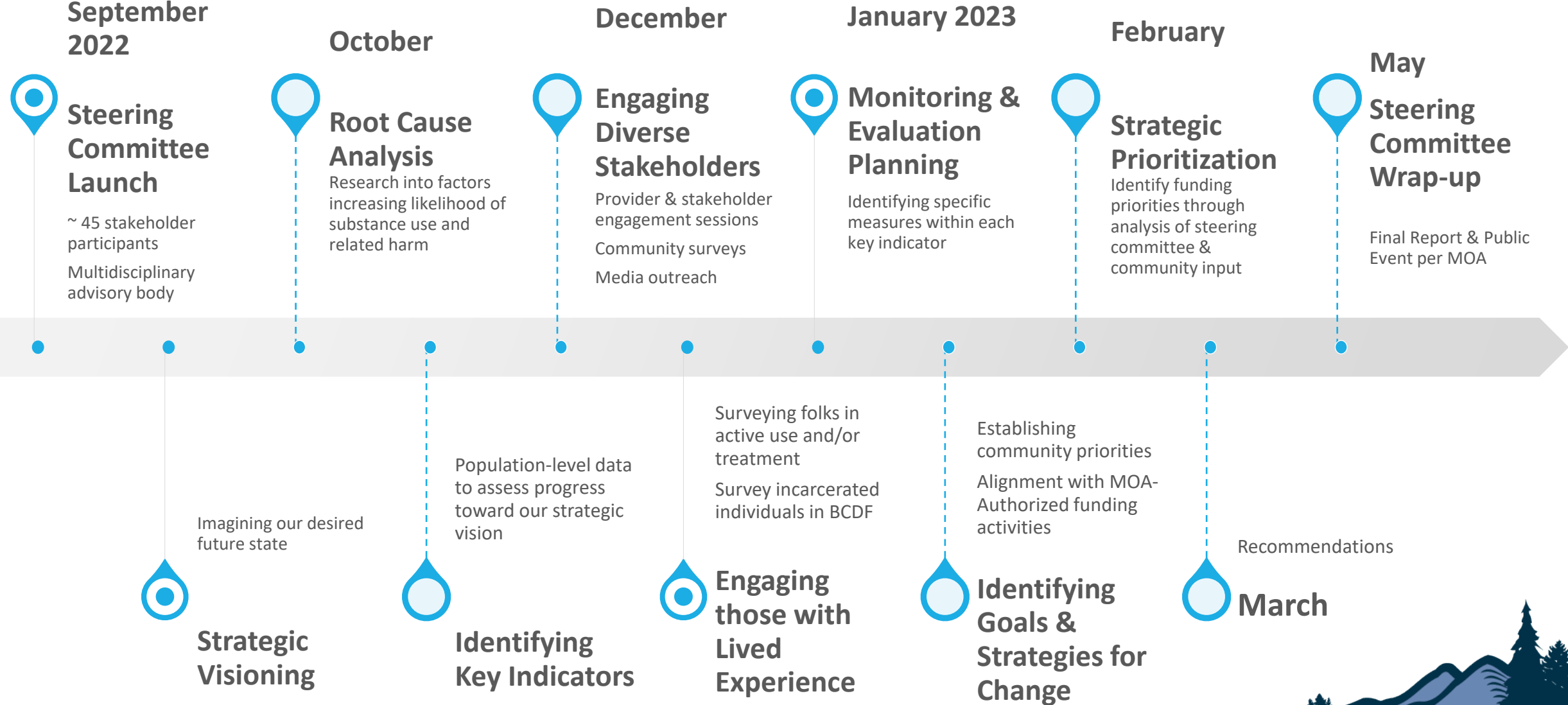


Outline

- Opioid Settlement
 - Strategic Planning Overview
 - Community Perspectives
 - Steering Committee Findings
 - Recommendations: A Dual Approach
- Fatal Overdose Emergency Response
 - Purpose & Structure
 - Enhance Data Collection & Reporting
 - Communication & Equity
 - Operational Strategies
- Discussion



Strategic Planning Overview



Community Perspectives

What's concerning?

- Visibility of substance use and homelessness
- Insufficient treatment slots and options for SUD recovery
- Increasing prevalence of use and lethality of substances

What's in the Way?

- Cost of care and/or lack of insurance
- Insufficient treatment slots and options
- Stigma – fear of judgement, consequences when seeking care (e.g. job loss)

What can help?

- Housing & shelter options
- Harm Reduction & education/awareness raising
- Employment Resources
- Healthcare Access



Steering Committee Findings

Root Cause of Substance Use and Related Harm

- Adverse Childhood Experiences/Trauma
- Social isolation
- Geographic isolation
- Systemic marginalization
- Disrupted, limited, or incomplete education opportunities
- Poverty
- Criminal justice involvement
- Housing insecurity and homelessness

Key Indicators

- Overdose deaths
- Overdose-related Emergency Department visits
- Families involved with CPS associated with substance use
- Criminal justice data related to substance use and/or distribution
- Social Determinants of Health
 - Economic stability
 - Education access
 - Healthcare access
 - Neighborhood and built environment
 - Social and community context



Recommendations: A Dual Approach

Prioritize life-saving and harm-reducing measures today

Fatal
Overdose
Emergency
Response

- Collaborative goal setting, objective identification, & prioritization
- Real-time information sharing
- Streamlined & consistent messaging

MAT Expansion

- Expand access to MAT in high impact areas
- Streamline data across County MAT programs

Acute Response
Resources

- Fund **Recovery Support Services** to address Social Determinants of Health
- Fund **Naloxone Distribution & Community Education**

Invest in prevention and longer-term planning to address root causes of substance use

Early
Intervention

- Invest in youth voice and leadership
- Education & awareness-raising
- Community-based resources (e.g. youth peer support programs)

Employment
-Related
Services

- Holistic care models support job readiness in treatment/shelter settings
- Employer collaboration to promote hiring & recovery-friendly workplaces

Recovery
Housing

- Support housing providers in meeting best-practice quality benchmarks
- Create opportunities to expand evidence-based housing options



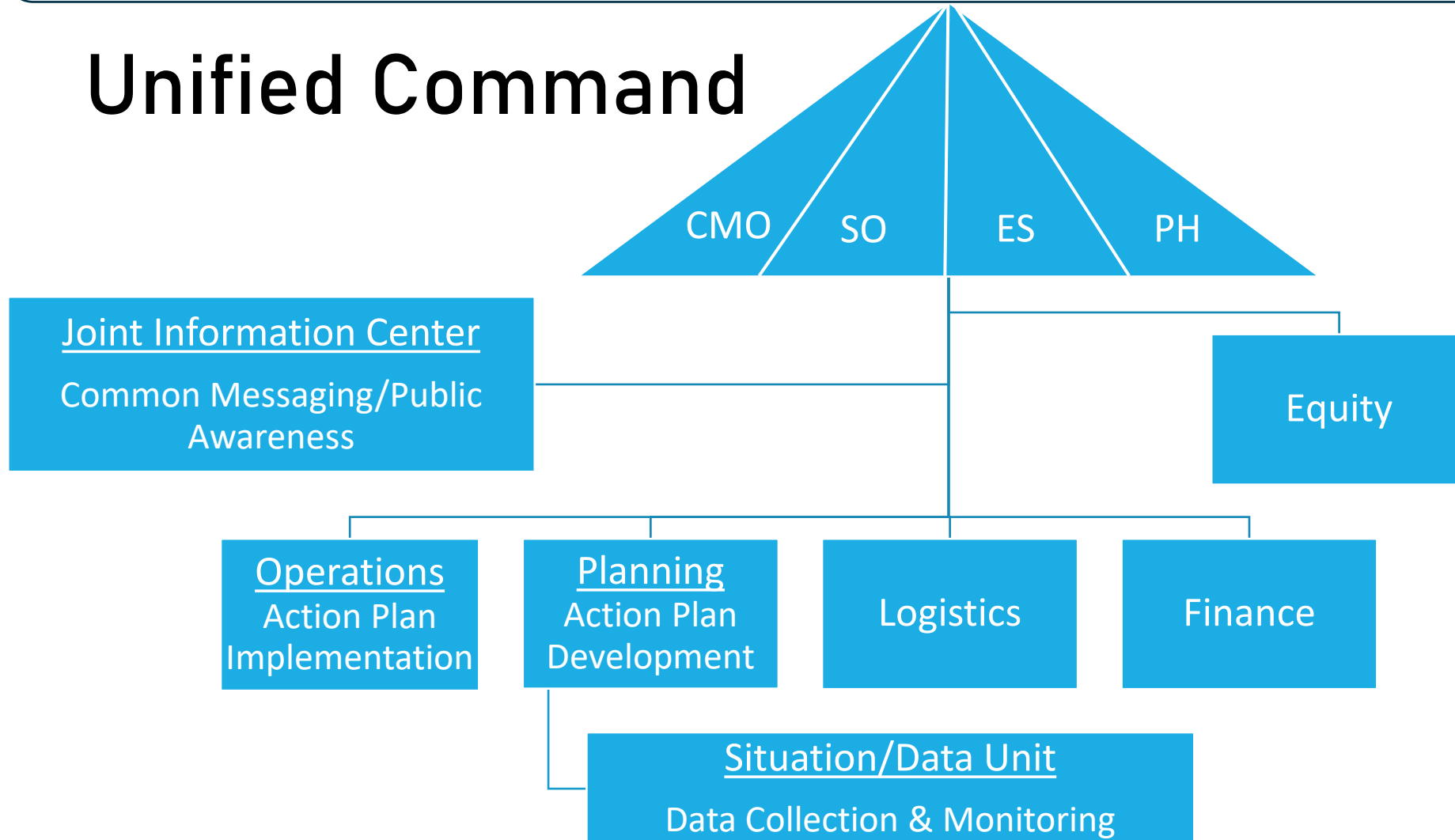
Fatal Overdose Emergency Response

- Purpose:
 - Utilize incident command structure to quickly respond and execute effective measures; based on real-time information
 - Increase public awareness and safety by ensuring direct, consistent and intentional messaging of substance use-related public safety threats and resources
 - Coordinate care across services & organizations to increase access to substance use recovery and resources for all
 - Deploy resources and information in the most equitable manner
- Scope:
 - Establish goals, objectives and priorities for eliminating overdose deaths
 - Identify taskforce activation criteria and procedures
 - Consolidate information sharing and access to real-time data to better understand substance use-related public safety threats



Fatal Overdose Emergency Response

Unified Command



Fatal Overdose Emergency Response

Improving Use of Data to Inform Response

Defining what information we need to know, collect and/or monitor in order to:

- Prevent overdoses
- Respond quickly in the event of an overdose
- Avoid loss of life in the event of an overdose
- Channel resources efficiently to achieve the above 3 points



Fatal Overdose Emergency Response

Community Awareness & Education

- Collaborate with network of community outreach efforts to inform and to disseminate information.
- Continue to build relationships and trust through outreach, listening, and responding.
- Sharing stories to reduce stigma and increase knowledge & access to supports.



Fatal Overdose Emergency Response

Equity Building Approaches

Changing
Program Entrance
Criteria

Partner with
BIPOC-led
Organizations

Recruit, Hire, and
Retain BIPOC

Intentional
Outreach and
Education

Centering
Program from
BIPOC Perspective

Reduce Barriers
to Access Services

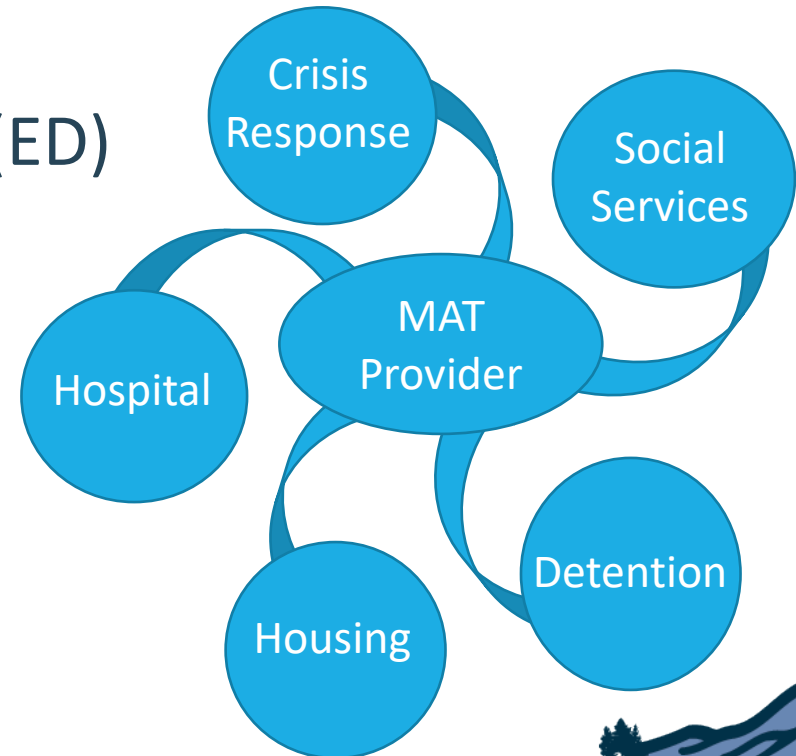


MAT Expansion

Expanding Bridges to Care

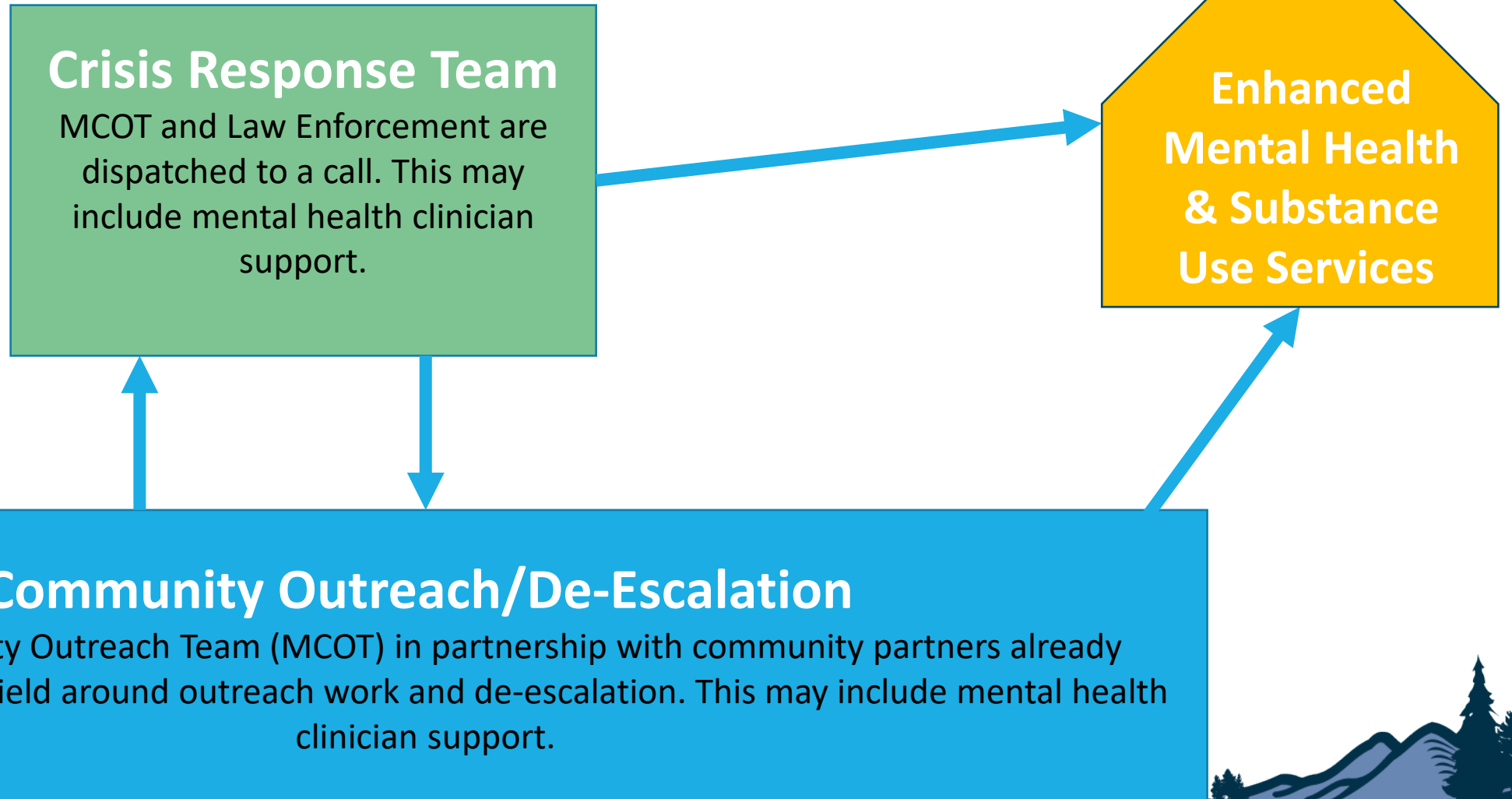
Building partnership with high touch, high impact locations for Community Paramedic MAT program to be the bridge for induction or sustainment of MAT until connected with an OUD clinic.

- Mission Hospital Emergency Department (ED)
- Buncombe County Detention Facility
- Housing Authority Communities
- Social Services
- Crisis Response



Enhanced Crisis Response

A whole-community approach equals a safer approach.



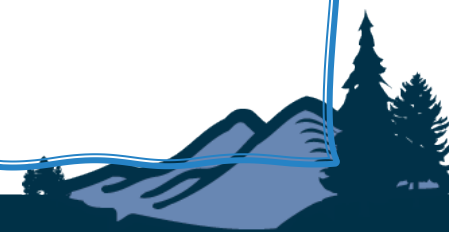
Acute Response Resources

Recovery Support Services

- Utilize Peer Supports to help educate, share community resources and be a support.
- Increase access to supports that address Social Determinants of Health
 - Accessing treatment, i.e. cost, transportation, medical care, lost wages, childcare
 - Housing support
 - Job training and transportation
 - Legal issues

Naloxone Education & Distribution

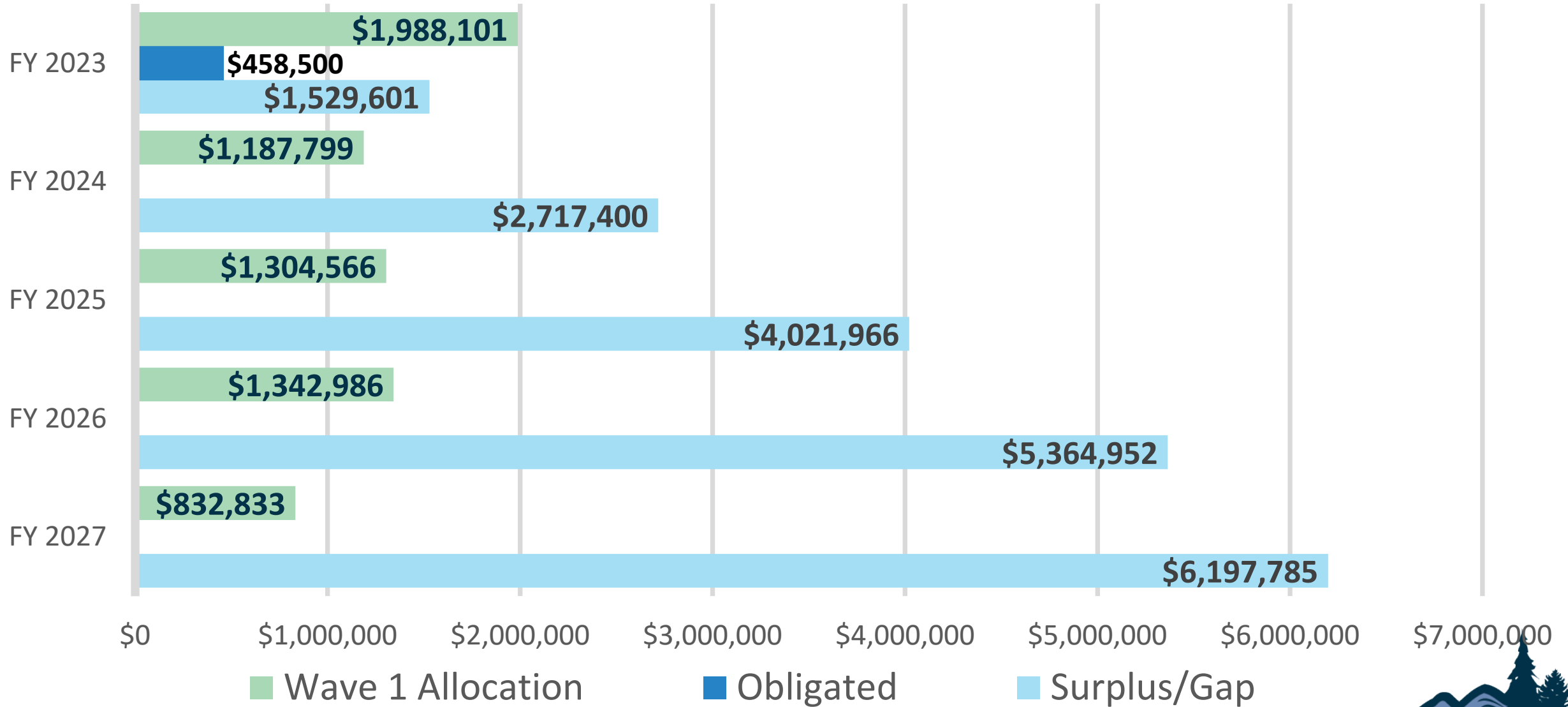
- Build community awareness around risks and resources.
- Expand education and access to Naloxone in communities not traditionally visiting harm reduction providers and hard to reach places.
- Create a culture of responding to an overdose emergency as we do for heart emergencies.



Financial Considerations & Impacts



Opioid Settlement Funds – Wave 1 Only



Maintaining Current Support Services

- County Manager and Strategy & Innovation \$242k
 - Behavioral Health Manager and Behavioral Health & Justice Analyst Positions (starting 1/1/24)
- Emergency Services – Community Paramedicine Post Overdose Response/MAT Teams \$426k
 - Peer Coordinator Position \$91k
 - Contract for Licensed Therapist \$125k (starting 10/1/23) & Peers Support Specialists \$210k (1 starting 10/1/23)
- Public Health – Health Promotions \$346k
 - Substance Use Services Coordinator Position \$111k (starting 10/1/23)
 - Wrap around services / support – Services or support to improve health and well-being \$185k
 - Naloxone Distribution \$50k
- Justice Services – Community Re-Entry Team \$330k (including wrap around services)
 - Contract for Program Manager \$96k & Case Managers \$194k

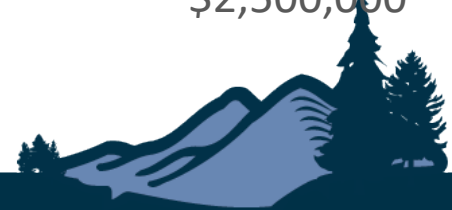
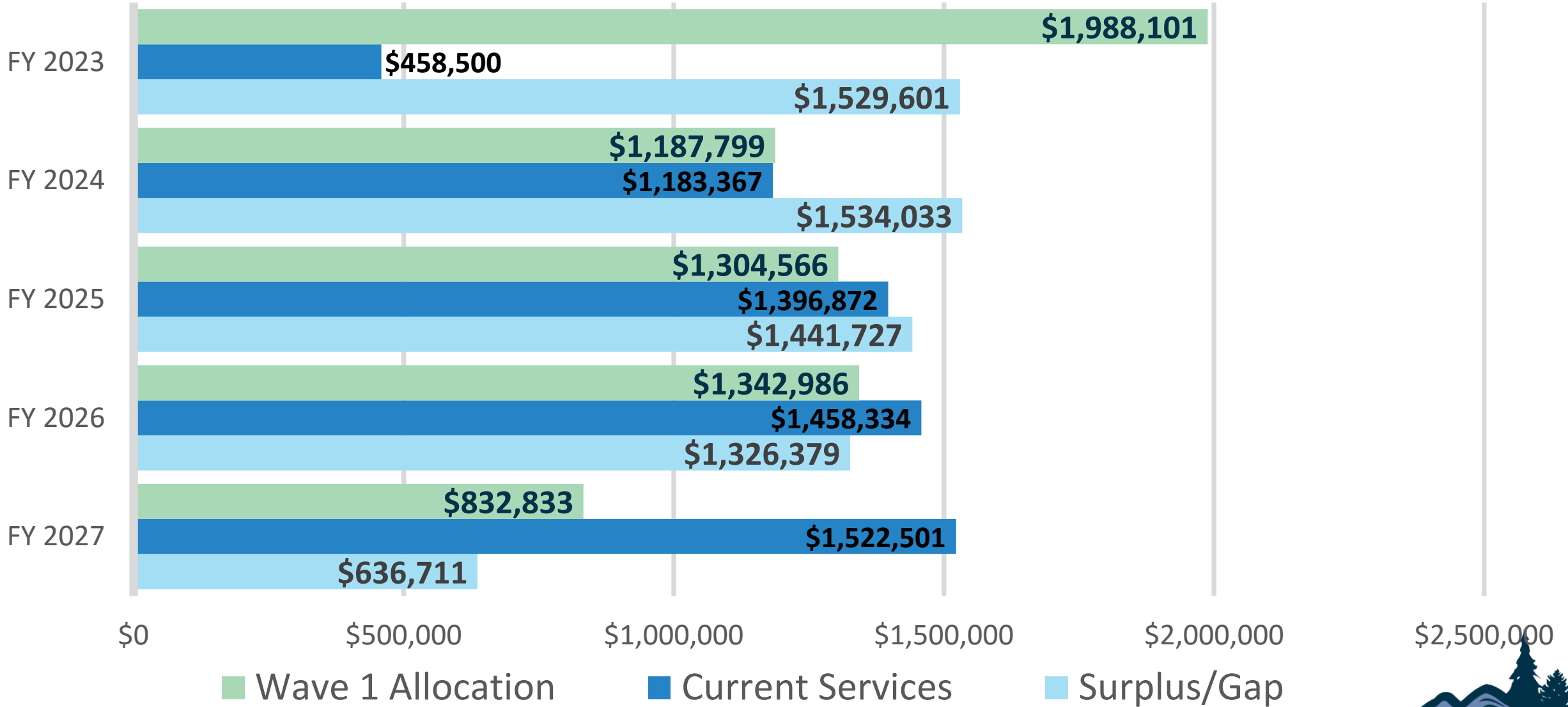
Full Year Total = \$1,344,000

FY24 Total = \$1,183,367

(currently in FY24 recommended budget)



Opioid Settlement Funds – Wave 1 Only



Expanding Services & Support

Expanded Bridges to Care

- Community Paramedicine – Expand to an additional Team of 3 & 3 Supervisor Positions = \$943,980
 - Evidenced Based Addiction Treatment – Fill gaps and overcome current funding barriers = \$60k
 - Wrap around services / support – Services or support to improve health and well-being = \$90k

Data Informed Responses

- Medical Substance Use Professional/Epidemiologist – Provide in depth analysis and reports to guide response = \$100k
- Nurse Navigation/Call Diversion (Data collection, analysis, and feasibility report) = \$25k (one-time cost)

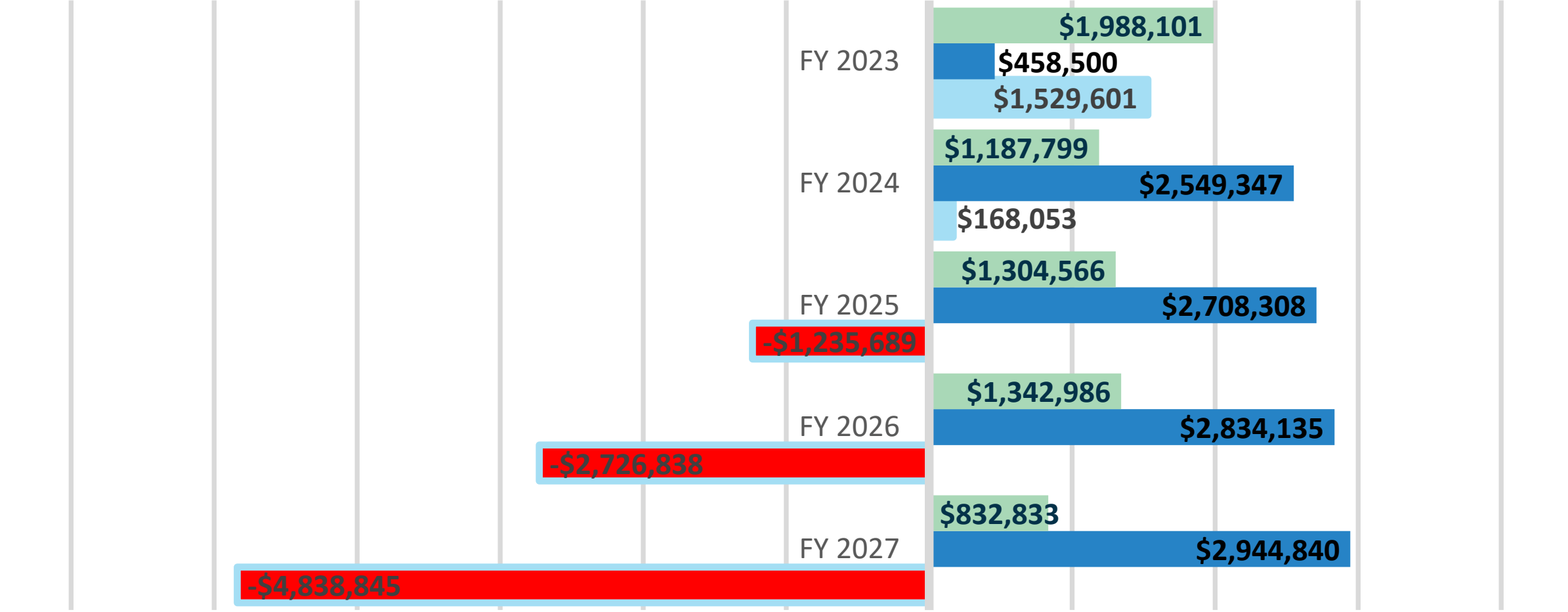
Enhanced Equitable Communication & Outreach

- Inclusive Engagement Specialist Position = \$92k
- Media & Engagement Materials = \$30k
- Naloxone Distribution = \$25k

Estimated Total = \$1,365,980 FY24



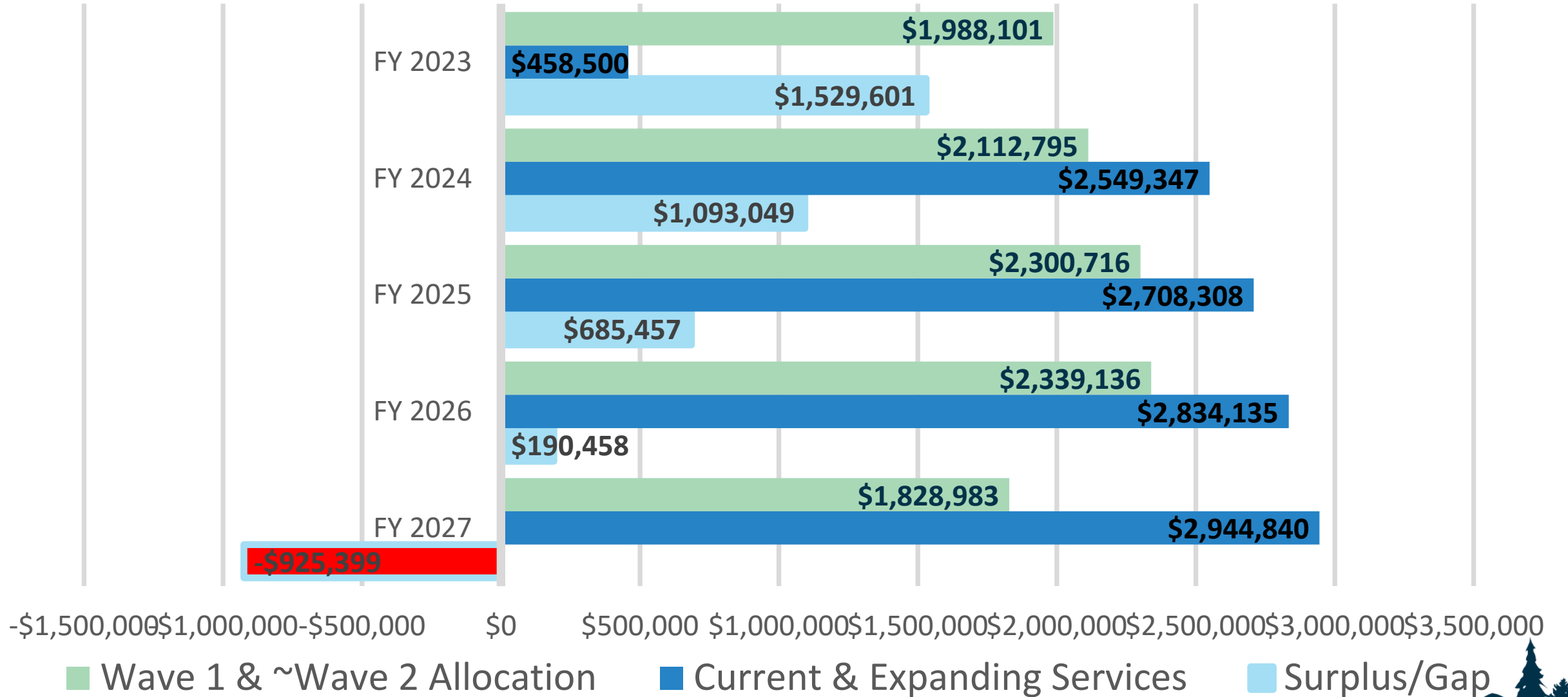
Opioid Settlement Funds – Wave 1 Only



■ Allocated from Wave 1 Settlement
 ■ Current & Expanding Services
 ■ Surplus/Gap



Opioid Settlement Funds – Wave 1 & 2



Recommendations: A Dual Approach

Invest in prevention and longer-term planning to address root causes of substance use

The Plan, as presented, is to maintain and expand services to address fatal overdoses only & does not include consideration for system level changes.

These recommendations would benefit from even minimal funding this first year to begin supporting efforts and to further evaluate future spending recommendations.

Early Intervention

- Invest in youth voice and leadership
- Education & awareness-raising
- Community-based resources (e.g. youth peer support programs)

Employment-Related Services

- Holistic care models support job readiness in treatment/shelter settings
- Employer collaboration to promote hiring & recovery-friendly workplaces

Recovery Housing

- Support housing providers in meeting best-practice quality benchmarks
- Create opportunities to expand evidence-based housing options



Proposed Next Steps

- Obtain guidance from the board on items to expand using Opioid Settlement funds.
- Budget Appropriation Consideration & Revision
 - Maintain current programs – included in FY24 Recommended Budget - \$1,183,367
 - Revise FY24 Recommended budget to include Expansion strategies - \$1,365,980
- FY24 Budget Adoption – June 20, 2023
- Move into full implementation of Fatal Overdose Response / Opioid strategies Expansion – July 1, 2023



Discussion

